

## Deutschlandmuseum

Leipziger Platz 7  
10117 Berlin

Tel: +49 30 2000 90 300

info@deutschlandmuseum.de  
[www.deutschlandmuseum.de](http://www.deutschlandmuseum.de)

## Information for guests with walking difficulties

Information on accessibility was reviewed on October 24, 2024 as part of the quality criteria / system "Tourism for all".

## Images of the building/object

---



Deutschlandmuseum

©Marina Rochel

---

## Parking & public transport

### External path

---



External path

©Marina Rochel

---

Width of the path: 250 cm

Length of the path: 25 m

The surface of the path is low in vibrations and easy to walk on (e.g. asphalt, narrow-jointed slabs, etc.).

Maximum longitudinal gradient of the path: 0 %

There is no seating available.

---

## Parking & public transport

The Potsdamer Platz S-Bahn and U-Bahn station is approx. 200 m away. There are no parking spaces for people with disabilities in the immediate vicinity.

## Entrance

---



Entrance

©Marina Rochel

---

## Entrance area

---



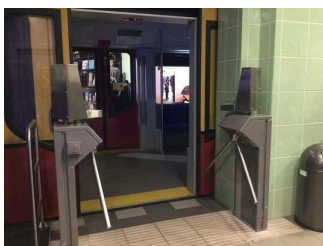
Entrance area

©Marina Rochel



Entrance area

©Marina Rochel



Entrance area

©Marina Rochel

---

The entrance / access to the building is possible without steps.

The entrance door

Clear width of the passageway: 120 cm

Type of door: double leaf

The door is opened without using any force (lever handle, light barrier sensor, motion detector, etc.).

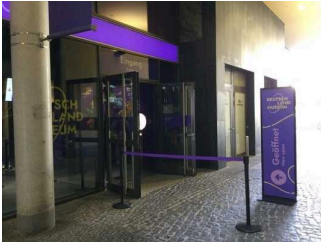
The WIDTH of the smaller manoeuvring area in front of / behind the door: 150 cm

The DEPTH of the smaller manoeuvring area in front of / behind the door: 150 cm

The threshold height: 0 cm

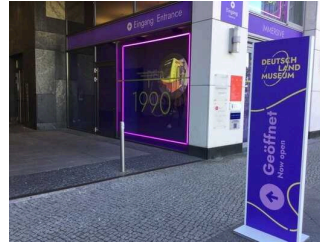
## Passage Leipziger Platz – Erna–Berger–Str.

---



Passage Leipziger Platz – Erna–Berger–Str.

©Marina Rochel



Passage Leipziger Platz – Erna–Berger–Str.

©Marina Rochel

---

Width of the path: 300 cm

Length of the path: 30 m

The surface of the path is low in vibrations and easy to walk on (e.g. asphalt, narrow-jointed slabs, etc.).

Maximum longitudinal gradient of the path: 0 %

There is no seating available.

### Input and output barrier

---



Input and output barrier

©Marina Rochel

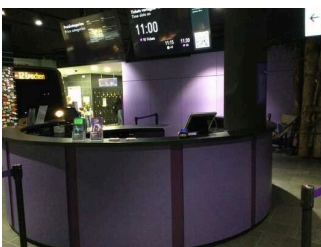
---

There are barriers at the entrance and exit of the exhibition. However, these can be folded away so that the passage width is at least 90 cm.

### Cash desk / Ticket counter

#### Counter/Cash Desk

---



Counter/Cash Desk

©Marina Rochel

---

The WIDTH of the manoeuvring space in front of the counter: 150 cm

The DEPTH of the manoeuvring space in front of the counter: 150 cm

---

The counter / cash desk is at its highest point 110 cm high.

The counter / cash desk is at its lowest point 110 cm high.

There is no other, equivalent communication possibility while in a sitting position.

## Showrooms

---



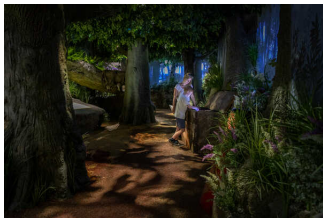
Showrooms

©Marina Rochel



Showrooms

©Marina Rochel



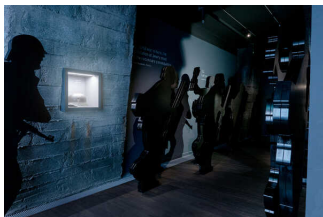
Showrooms

Copyright David Weyand. All rights reserved



Showrooms

Copyright David Weyand. All rights reserved



Showrooms

©Deutschlandmuseum



Showrooms

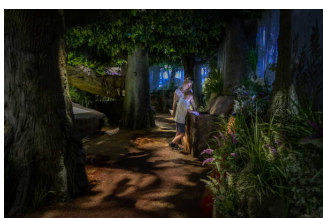
©Deutschlandmuseum

---

## Showroom/Hall

### Showroom

---



Showroom

David Weyand



Showroom

©Marina Rochel



Showroom

©Marina Rochel



Showroom

©Marina Rochel

The width of the narrowest passageway in the room: 110 cm

## Showroom 1th floor



Showroom 1th floor

©Marina Rochel



Showroom 1th floor

©Marina Rochel



Showroom 1th floor

©Marina Rochel



Showroom 1th floor

©Deutschlandmuseum

The width of the narrowest passageway in the room: 110 cm

## Threshold/step/stairs

### Stairs ground floor to first floor

Existing thresholds/steps: 20

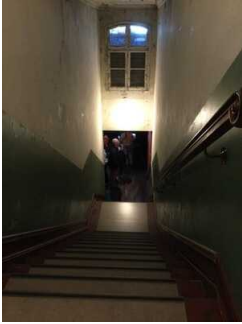
The height of the thresholds/steps: 19 cm

The staircase has a handrail on one side.



## Threshold/step/stairs

---



Stairs upstairs to ground floor

©Marina Rochel

---

Existing thresholds/steps: 20

The height of the thresholds/steps: 19 cm

The staircase has a handrail on one side.

## Elevator/lift

---



Elevator/lift

©Marina Rochel



Elevator/lift

©Marina Rochel



Elevator/lift

©Marina Rochel

---

The WIDTH of the manoeuvring space in front of the elevator when entering: 150 cm

The DEPTH of the manoeuvring space in front of the elevator when entering: 150 cm

Clear passage width of the elevator door: 90 cm

The WIDTH of the cabin inside: 110 cm

The DEPTH of the cabin inside: 220 cm

The WIDTH of the manoeuvring space in front of the elevator when exiting: 150 cm

The DEPTH of the manoeuvring space in front of the elevator when exiting: 150 cm

There is no horizontal control panel.

Additional information only available in German: Elevator can only be used with service staff. Guests can obtain a telephone at the cash desk with which they can call a service employee for the elevator.

## Ways

---



Ways

©Marina Rochel



Ways

©Marina Rochel

---

Length of the corridor/way/aisle: 400 m

Minimum width of the corridor/way/aisle: 110 cm

Existing passageways are at least 88 cm wide.

Additional information only available in German: Some of the paths are not easy to walk and drive on due to the surface conditions.

## Door

### Door

Clear width of the passageway: 90 cm

Type of door: single leaf

The WIDTH of the smaller manoeuvring area in front of / behind the door: 150 cm

The DEPTH of the smaller manoeuvring area in front of / behind the door: 150 cm

The threshold height: 1 cm

Additional information only available in German: Access to the elevator by staff only

### Door from exhibition 1. OG To the elevator vestibule

Clear width of the passageway: 110 cm

Type of door: single leaf

The door is opened by a service technician.

The WIDTH of the smaller manoeuvring area in front of / behind the door: 150 cm

The DEPTH of the smaller manoeuvring area in front of / behind the door: 150 cm

The threshold height: 0 cm

---

Additional information only available in German: Access to the elevator by staff only

## Shop

---



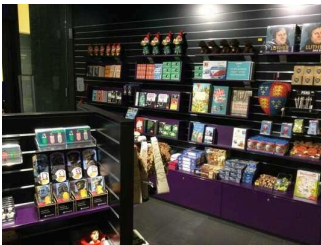
### Shop

©Marina Rochel

---

## Shop

---



### Shop

©Marina Rochel

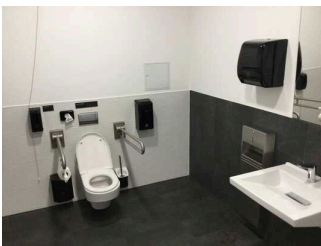
---

The width of the narrowest passageway in the room: 100 cm

There is no seating available.

## Public toilet

---



### Public toilet

©Marina Rochel

---



## Public toilet

---



Public toilet

©Marina Rochel



Public toilet

©Marina Rochel

---

Door to public toilet

Clear width of the passageway: 90 cm

Type of door: single leaf

The door is opened requiring the users own effort.

The smaller manoeuvring area in front of / behind the door is 150 cm deep an 150 cm wide.

The threshold height: 0 cm

The toilet door can be opened without a key.

### Toilet/WC

There is a uni-sex toilet.

There is a toilet available for people with disabilities.

The depth of the toilet bowl: 70 cm

The WIDTH of the manoeuvring space left of the toilet: 81 cm

The DEPTH of the manoeuvring space left of the toilet: 70 cm

The WIDTH of the manoeuvring space right of the toilet: 112 cm

The DEPTH of the manoeuvring space right of the toilet: 70 cm

The WIDTH of the manoeuvring space in front of the toilet: 150 cm

The DEPTH of the manoeuvring space in front of the toilet: 150 cm

The height of the toilet seat: 40 cm

There is a grab rail on the left side of the toilet.

There is a grab rail on the right side of the toilet.

### Washbasin/sink

The WIDTH of the manoeuvring space in front of the sink: 150 cm

The DEPTH of the manoeuvring space in front of the sink: 150 cm

---

## **Corridor in front of toilets and lockers**

Length of the corridor/way/aisle: 10 m

Minimum width of the corridor/way/aisle: 170 cm

Existing passageways are at least 88 cm wide.

## **Aids**

### **Alarm/Aids**